

When you're in the business of making or breaking patents, turn to *PatentOptimizer™* to help improve the quality of your patent analysis and applications.

LexisNexis® *PatentOptimizer* is a revolutionary approach to creating consistently high-quality patent applications and analyzing issued patents. Created by patent agents, it brings new efficiency to developing patent applications and to the online analysis of existing patents. With the critical quality control you gain, you can work with added confidence.

PatentOptimizer helps you:

- Develop internally consistent, concise, and well-tailored patent applications
- Analyze and dissect online-issued patents
- Analyze across an entire patent portfolio

Ultimately, the streamlined process of analyzing and creating patents with *PatentOptimizer* not only saves time, but helps improve the quality of work product.

Whether you're prosecuting or litigating, this powerful service can help you work more efficiently.



Check and Compare Claims

- Check antecedent basis
- Identify terms or phrases exclusive to the claims or description
- Quickly research specific claim elements in the prior art leveraging advanced features such as semantic search, and capture/associate prior art, reference data into an auto-generated claim hierarchy
- Pinpoint new or deleted matter across a series of patent documents
- Detect new and deleted matter appearing in the claims or specification of a defined set of documents
- Match claim-set language across a series of documents



Check Terms

- Uncover, retrieve and validate cases that have defined key terms in your document
- Identify prior art usage in other patents
- Find narrower, broader or related alternate terms
- Detect and report terms from user-provided dictionaries
- Auto-generate custom glossaries



Check References

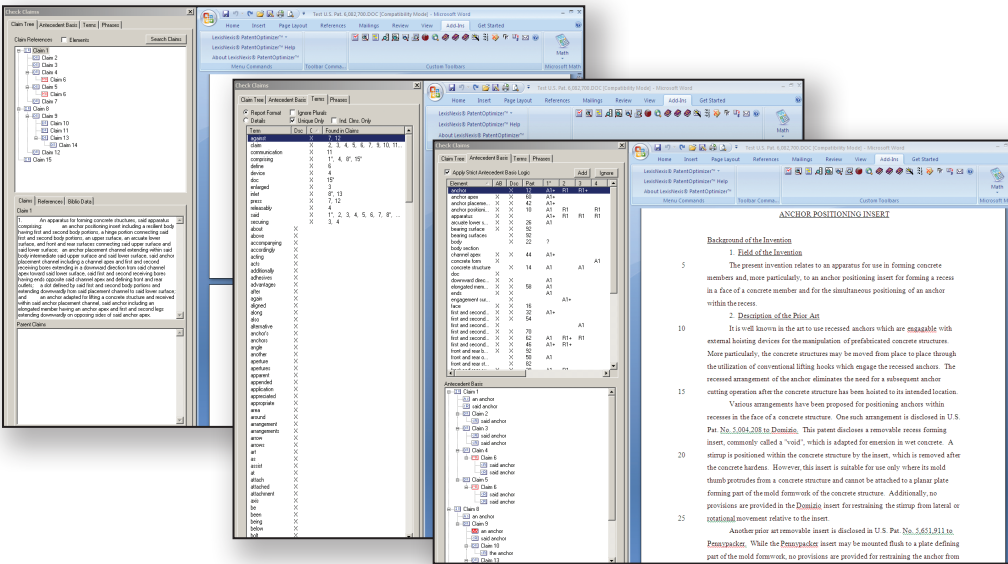
- View a comprehensive post-issuance activity report for cited U.S. and international patents (with Microsoft® Excel® export capabilities)
- Retrieve related case dockets from CourtLink®
- Order pertinent file wrappers from REEDFAX®
- Export patent references into IDS forms (including EFS-Web form)
- Quickly retrieve the full text of all cited patents from TotalPatent™.



Check Parts

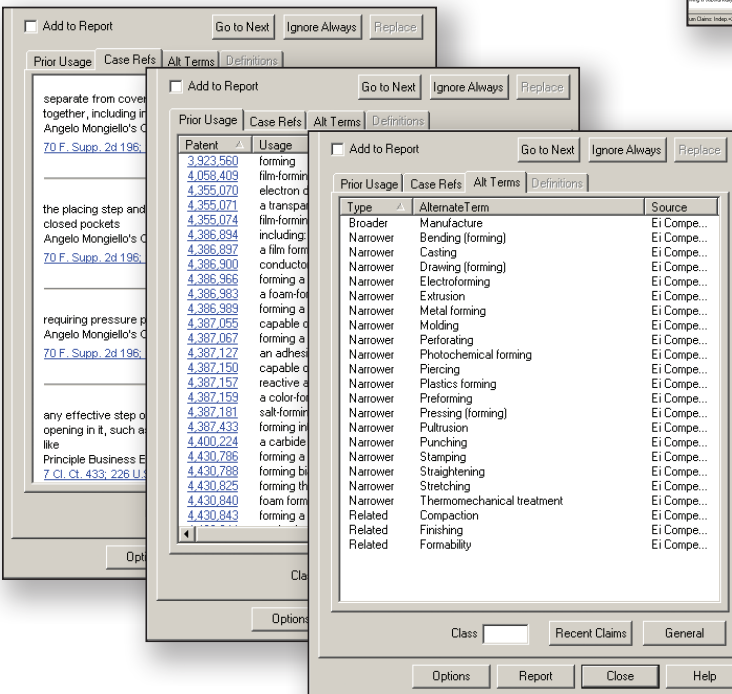
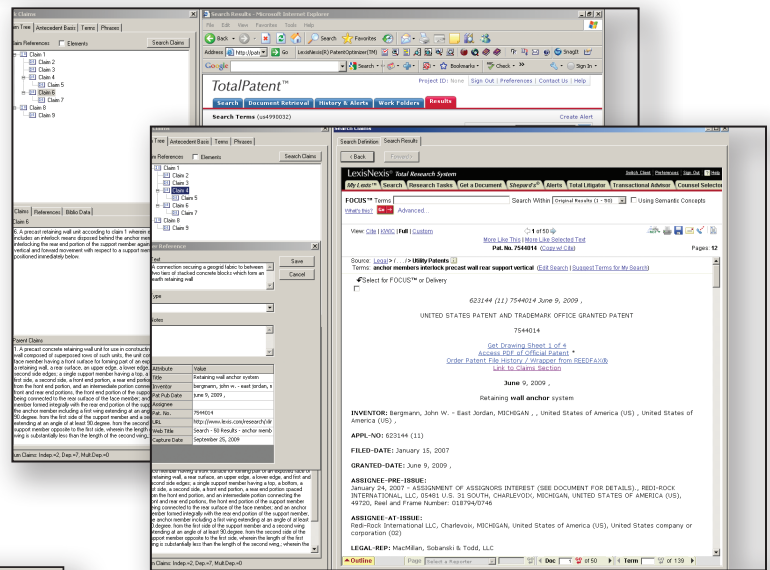
- Check the accuracy and consistency of your reference figures and related numbers/labels
- Correct inconsistencies with flexible document-editing capabilities
- Auto-insert part numbers into parts appearing in the abstract, claims or description
- Utilize shorthand notations for reciting parts while drafting
- Concord part recitations appearing in the specification with part numbers appearing in the drawing figures.

Key LexisNexis PatentOptimizer features



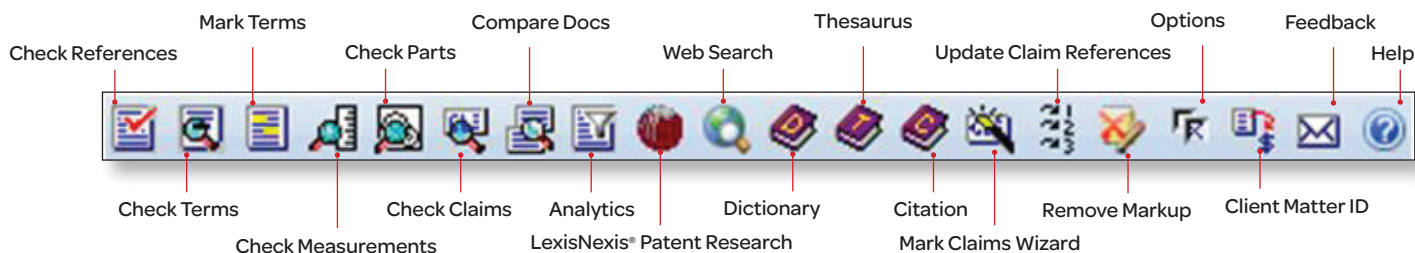
Navigate an auto-generated claim hierarchy, pinpoint antecedent basis anomalies, locate claim elements lacking support in the disclosure and/or drawings, and identify terms or phrases exclusive to the claims or description.

Catalog your research findings by type, add notes and comments regarding the captured reference data, and auto-capture the bibliography data of a reference.



Find broader, narrower or related alternate terms.

LexisNexis *PatentOptimizer* toolbar in Microsoft® Word



Other *PatentOptimizer* features

Mark Terms	Loads the <i>Attorney's Dictionary of Patent Claims</i> , Ei Thesaurus® and Lexis® case-law annotations, then scans the document and highlights relevant terms that match.
Check Measurements	Automatically detects and converts common English measurements into metric. Flags inaccurate user-entered conversions.
Compare Docs	Detects new and deleted matter appearing in the claims or specifications of a defined set of documents.
Web Search	Searches a multitude of Web search engines for particular terms or phrases in a patent.
Dictionary and Thesaurus	Links to some of the most popular dictionaries and thesauri on the Internet.
Patent Citation	Automatically inserts fully formatted patent citations into your document, including hyperlinks.
Mark Claims Wizard	Enables the Update Claim References feature (listed below) and hyperlinks dependent claim references to their parent claims.
Update Claim References	Renumbers claims and claim references to reflect recent updates/amendments made to the claims.
Remove Markup	Removes the hypertext markup from marked claims and linked citations.

Want to learn more?

1-800-255-5174 or sales@lexisnexis.ca

www.lexisnexis.ca/totalpatent

